

TECHNICAL MANUAL

**DIRECT SUPPORT AND GENERAL SUPPORT
MAINTENANCE**

REPAIR PARTS AND SPECIAL TOOLS LISTS

**(INCLUDING DEPOT MAINTENANCE REPAIR PARTS
AND SPECIAL TOOLS)**

FOR

**MOTOR-GENERATORS PU-543/A AND
PU-543C/A**

(NSN 6125-00-938-6539)

HEADQUARTERS, DEPARTMENT OF THE ARMY

MARCH 1978

TECHNICAL MANUAL }
NO. 11-6125-220-34P }

HEADQUARTERS
DEPARTMENT OF THE ARMY
WASHINGTON, DC, 21 March 1978

**DIRECT SUPPORT AND GENERAL SUPPORT MAINTENANCE
REPAIR PARTS AND SPECIAL TOOLS LISTS
(INCLUDING DEPOT MAINTENANCE REPAIR PARTS AND SPECIAL TOOLS)
FOR
MOTOR-GENERATORS PU-543B/A AND PU-543C/A
(NSN 6125-00-938-6539)**

Current as of 4 November 1977

REPORTING OF ERRORS

You can improve this manual by recommending improvements using DA Form 2028-2 (Test) located in the back of the manual. Simply tear out the self addressed form, fill it out as shown on the sample, fold it where shown, and drop it in the mail.

If there are no blank DA Form 2028-2 (Test) in the back of your manual, use the standard DA Form 2028 (Recommended Changes to Publications and Blank Forms) and forwarded to the Commander, US Army Communications and Electronics Readiness Command, ATTN: DRSEL-MA-Q, Fort Monmouth, NJ 07703.

In either case a reply will be furnished direct to you.

Table of Contents

Section		Page	Illus Figure
	I. Introduction	1	
	II. Repair parts list	5	
Group	00 Motor Generators PU-543B/A, PU-543C/A	5	1-2
	01 Regulator, voltage and frequency	13	3-5
Section-	III. Special tools list (Not applicable)		
	IV. National stock number and part number index	22	

* This manual supersedes TM 11-6125-220-34P, 29 November 1974

SECTION I INTRODUCTION

1. Scope

This manual lists spares and repair parts; special tools; special test, measurement, and diagnostic equipment (TMDE), and other special support equipment required for performance of direct support and general support maintenance of the PU-543B/A and PU543C/A. It authorizes the requisitioning and issue of spares and repair parts as indicated by the source and maintenance codes.

2. General

This Repair Parts and Special Tools List is divided into the following sections:

a. Section II. Repair Parts List. A list of spares and repair parts authorized for use in the performance of maintenance. The list also includes parts which must be removed for replacement of the authorized parts. Parts lists are composed of functional groups in numeric sequence, with the parts in each group listed in figure and item number sequence.

b. Section III. Special Tools List. Not applicable.

c. Section IV. National Stock Number and Part Number Index. A list, in National item identification number (NIIN) sequence, of all National stock numbers (NSN) appearing in the listings, followed by a list, in alphameric sequence, of all part numbers appearing in the listings. National stock numbers and part numbers are cross-referenced to each illustration figure and item number appearance.

3. Explanation of Columns

a. Illustration. This column is divided as follows:

(1) *Figure number.* Indicates the figure number of the illustration on which the item is shown.

(2) *Item number.* The number used to identify item called out in the illustration.

b. Source, Maintenance, and Recoverability (SMR) Codes.

(1) *Source code.* Source codes indicate the manner of acquiring support items for maintenance, repair, or overhaul of end items. Source codes are entered in the first and second positions of the Uniform SMR Code format as follows:

<i>Code</i>	<i>Definition</i>
PA	Item procured and stock for anticipated or known usage.
XD	A support item that is not stocked. When required, item will be procured through normal supply channels.

NOTE

Cannibalization or salvage may be used as a source of supply for any items source coded above except those coded XA and aircraft support items as restricted by AR 700-42.

(2) *Maintenance code.* Maintenance codes are assigned to indicate the levels of maintenance authorized to USE and REPAIR support items. The maintenance codes are entered in the third and fourth positions of the Uniform SMR Code format as follows:

(a) The maintenance code entered in the third position will indicate the lowest maintenance level authorized to remove, replace, and use the support item. The maintenance code entered in the third position will indicate one of the following levels of maintenance:

<i>Code</i>	<i>Application/Explanation</i>
O	Support item is removed, replaced, used at the organizational level.
F	Support item is removed, replaced, used at the direct support level.
H	Support item is removed, replaced, used at the general support level.

(b) The maintenance code entered in the fourth position indicates whether the item is to be repaired and identifies the lowest maintenance level with the capability to perform complete repair (i.e., all authorized maintenance functions). This position will contain one of the following maintenance codes:

<i>Code</i>	<i>Application/Explanation</i>
H	The lowest maintenance level capable of complete repair of the support item is the general support level.
Z	Nonreparable. No repair is authorized.

(3) *Recoverability code.* Recoverability codes are assigned to support items to indicate the disposition action on unserviceable items. The recoverability code is entered in the fifth position of the Uniform SMR Code format as follows:

<i>Recoverability Codes</i>	<i>Definition</i>
Z	Nonreparable item. When unserviceable, condemn and dispose at the level indicated in position 3.
H	Reparable item. When uneconomically reparable, condemn and dispose at the general support level.

c. National Stock Number. indicates the National stock number assigned to the item and will be used for requisitioning purposes.

d. Part Number. Indicates the primary number used by the manufacturer (individual, company, firm, corporation, or Government activity which controls the design and characteristics of the item by means of its engineering drawings, specifications, standards, and inspection requirements to identify an item or range of items.

NOTE

When a stock numbered item is requisitioned, the repair part received may have a different part number than the part being replaced.

e. Federal Supply Code for Manufacturere (FSCM). The FSCM is a 5 digit numeric code listed in SB 708-42 which is used to identify the manufacturer, distributor, or Government agency, etc.

f. Description. Indicates the Federal item name and, if required, a minimum description to identify the item.

g. Unit of Measure (U/M). Indicates the standard of the basic quantity of the listed item as used in performing the actual maintenance function. This measure is expressed by a two character alphabetical abbreviation (e.g., ea, in, pr, etc). When the unit of measure differs from the unit of issue, the lowest unit of issue that will satisfy the required units of measure will be requisitioned.

h. Quantity Incorporated in Unit. Indicates the quantity of the item used in the breakout shown on the illustration figure, which is prepared for a functional group, subfunctional group, or an assembly.

4. Special Information

a. Usable on codes are shown in the description column. Uncoded items are applicable to all models. Identification of the usable on codes used in this publication are:

<i>Code</i>	<i>Used on</i>
BBW	PU-543B/A
5HY	PU-543C/A

b. The following publications pertain to the PU-543B/A and PU-543C/A and its components:

- TM 11-6125-220-12, Motor Generators PU-543/A, PU-543A/A, PU-543B/A and PU-543C/A (MS-21983)
- TM 11-6125-220-12, Motor Generators PU-543/A, PU-543A/A, PU-543B/A and PU-543C/A

5. How to Locate Repair Parts

a. When National stock number or part number is unknown.

a. When National stock number or part number is unknown.

(1) *First.* Using the table of contents, determine the functional group within which the item belongs. This is necessary since illustrations are prepared for functional groups and listings are divided into the same groups.

(2) *Second.* Find the illustration covering the functional group to which the item belongs.

(3) *Third.* Identify the item on the illustration and note the illustration figure and item number of the item.

(4) *Fourth.* Using the Repair Parts Listing, find the figure and item number noted on the illustration.

b. When National stock number of part number is known.

(1) *First.* Using the Index of National Stock Numbers and Part Numbers. Find the pertinent National stock number or part number. This index is in NIIN sequence followed by a list of part numbers in alphameric

sequence, cross-referenced to the illustration figure number and item number.

(2) *Second.* After finding the figure and item number, locate the figure and item number in the repair parts list.

6. Abbreviations

Not applicable.

(Next printed page is 4.)

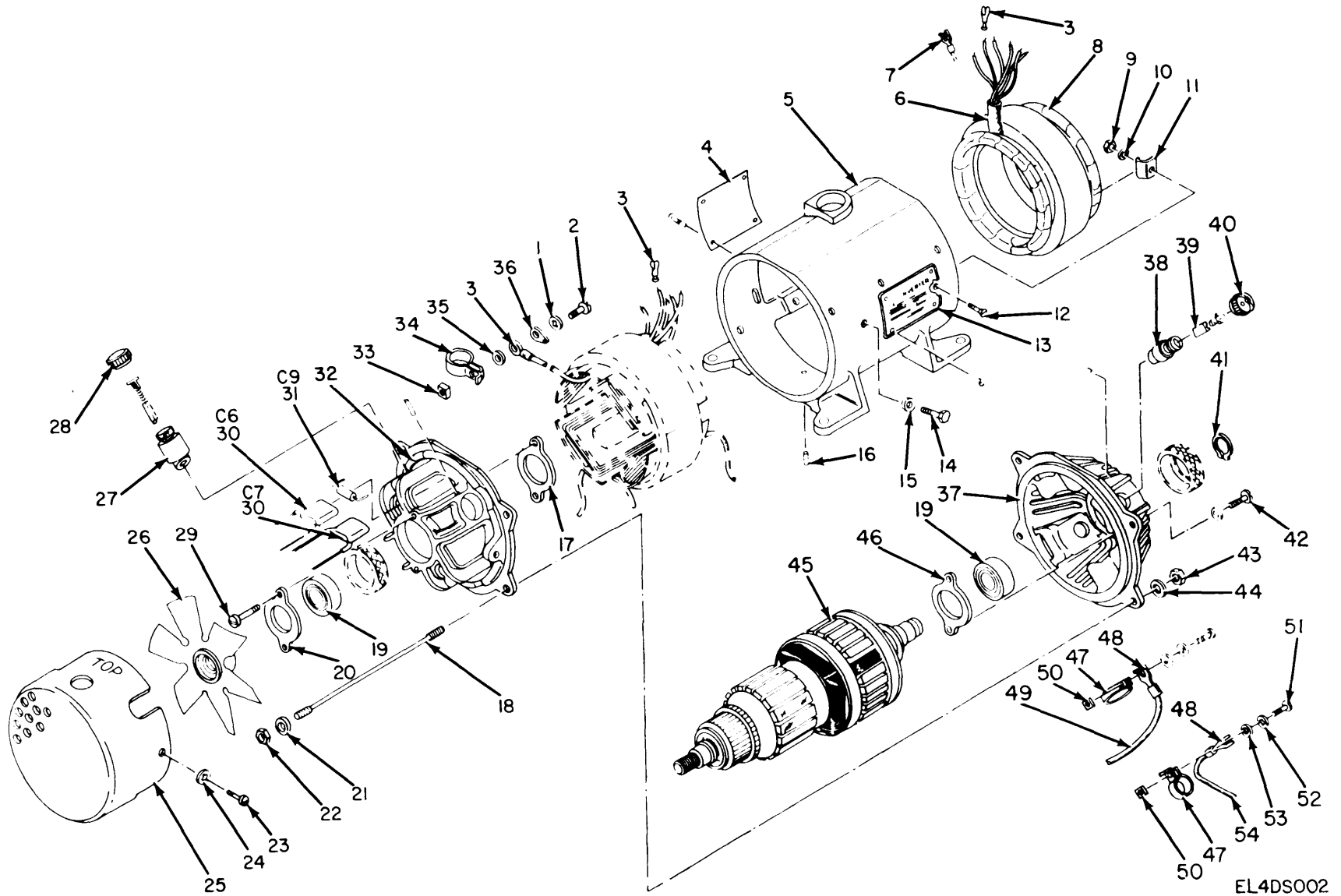


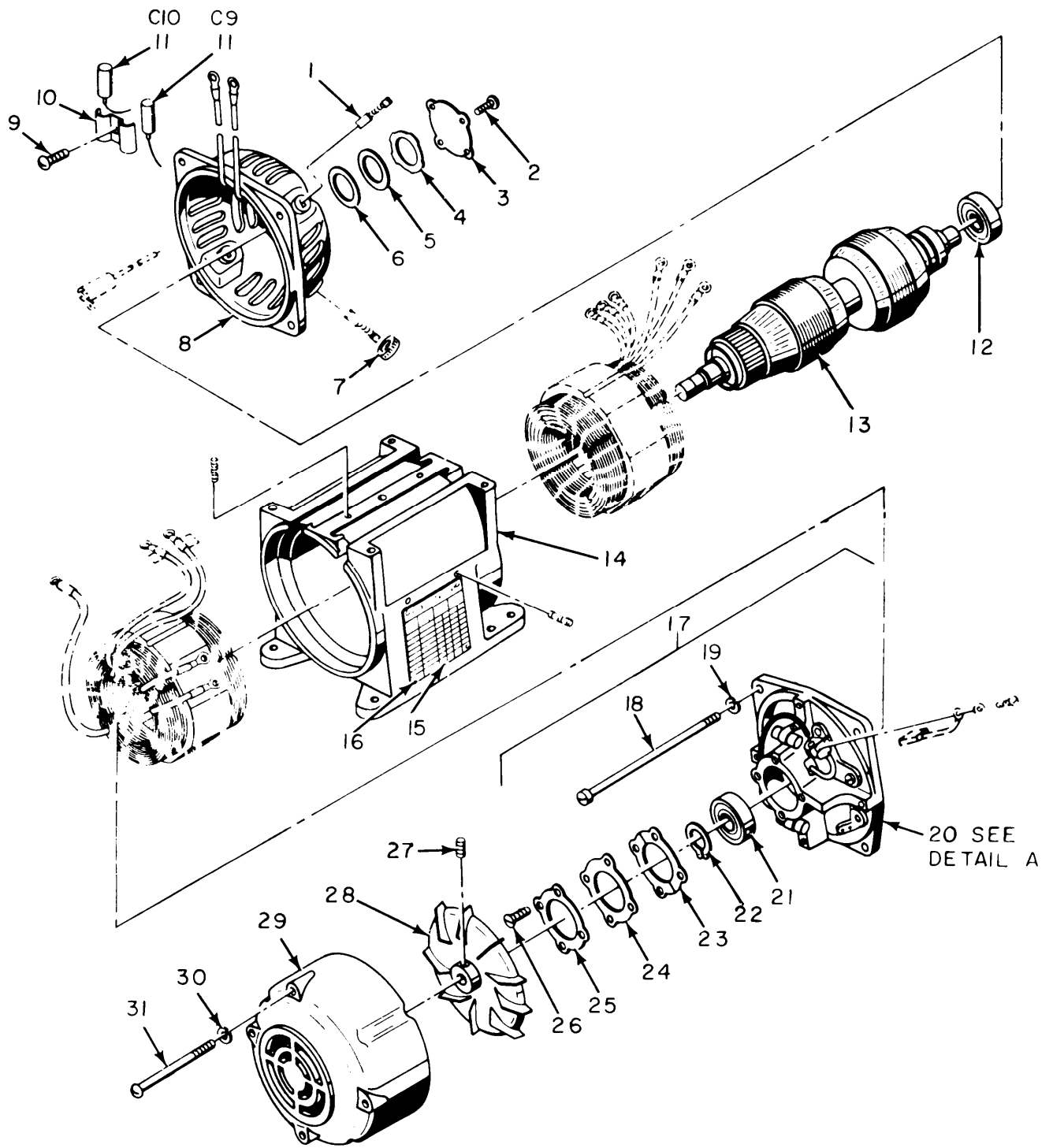
Figure 1. Motor-Generator PU-543B/A, Rotating Section.

(1) ILLUSTRATION		(2)	(3)	(4)	(5)	(6)	(7)	(8)
(a) FIG NO.	(b) ITEM NO.	SMR CODE	NATIONAL STOCK NUMBER	PART NUMBER	FSCM	DESCRIPTION	U/M	QTY INC IN UNIT
						GROUP 00 MOTOR-GENERATORS PU-543B/A, PU-543C/A		
						USABLE ON CODE		
1	1	PAHZZ	5310-00-274-8682	AN936A6	88044	WASHER, LOCK	BBW EA	4
1	2	XDHZZ		819166-116	83298	SCREW	BBW EA	4
1	3	PAHZZ	5940-00-204-8990	MS25036-11	96906	TERMINAL	BBW EA	3
1	4	XDFZZ		1537021	83298	TAG, WARNING	BBW EA	1
1	5	XDHZZ		1543573	83298	HOUSING	BBW EA	1
1	6	XDHZZ		890646-10	03298	SLEEVING	BBW EA	1
1	7	PAHZZ	5940-00-577-3807	MS25036-45	96906	TERMINAL, LUG	BBW EA	1
1	8	PAHZZ	6125-00-944-4219	1543572	83298	STATOR, MG	BBW EA	1
1	9	XDHZZ		AN340-6	88044	NUT	BBW EA	2
1	10	XDHZZ		890487	83298	WASHER	BBW EA	2
1	11	XDHZZ		1533547	83298	CLIP, RETAINING	BBW EA	2
1	12	XDHZZ		819146-110	83298	SCREW	BBW EA	2
1	13	XDFZZ		1543449	83298	PLATE, IDENT	BBW EA	1
1	14	XDHZZ		819178-116	83298	SCREW	BBW EA	2
1	15	XDHZZ	5310-00-515-8058	AN960-8	88044	WASHER, FLAT	BBW EA	2
1	16	PAHZZ	5315-00-291-5471	MS171431	96906	PIN, SPRING	BBW EA	1
1	17	XDHZZ		1533170-3	83298	RETAINER, BEARING	BBW EA	1
1	18	XDHZZ		1530263	83298	STUD	BBW EA	4
1	19	PAHZZ	3110-00-106-8843	MS17107-1	96906	BEARING, BALL	BBW EA	1
1	20	XDHZZ		1533170-2	83298	RETAINER, BEARING	BBW EA	1
1	21	PAHZZ	5310-00-167-0816	960-6	88044	WASHER	BBW EA	12
1	22	XDHZZ		34006	88044	NUT	BBW EA	8
1	23	XDHZZ		819166-108	83298	SCREW	BBW EA	2
1	24	XDHZZ		819196-106	83298	WASHER, LOCK	BBW EA	2
1	25	PAHZZ	6125-00-926-6346	1533219	83298	COVER, END BELL	BBW EA	1
1	26	XDHZZ		1533218	83298	FAN	BBW EA	1
1	27	PAFZZ	5977-00-076-0517	1533635	83298	HOLDER, BRUSH	BBW EA	4
1	28	PAHZZ	5999-00-905-1980	C68	46992	CAP, BRUSH HOLDER	BBW EA	4
1	29	XDHZZ		1533227	83298	SCREW	BBW EA	2
1	30	PAHZZ	5910-00-689-8751	5C50	56289	CAPACITOR	BBW EA	2
1	31	PAHZZ	5910-01-004-9276	M39006-09-8586	81349	CAPACITOR	BBW EA	1
1	32	XDHZZ		1540893	83298	END BELL, DC	BBW EA	1
1	33	XDHZZ		153768-2	83298	NUT, SQUARE	BBW EA	4
1	34	XDHZZ		1533738	83298	CLAMP, BRUSH HOLDER	BBW EA	4
1	35	PAHZZ	5310-00-849-3952	1102665	83298	WASHER	BBW EA	4
1	36	PAHZZ	5940-00-204-8966	MS25036-2	96906	TERMINAL, LUG	BBW EA	5
1	37	XDHZZ		1540892	83298	END BELL, AC	BBW EA	1
1	38	PAFZZ	5977-00-076-0517	1533633	83298	HOLDER, BRUSH	BBW EA	2
1	39	PAFZZ	6125-00-999-8327	1118091	83298	KIT, BRUSH	BBW EA	1
1	40	PAFZZ	5999-00-926-3142	A52	46992	CAP, BRUSH HOLDER	BBW EA	2

SECTION II

TM11-6125-220-34P

(1) ILLUSTRATION		(2)	(3)	(4)	(5)	(6)	(7)	(8)
(a) FIG NO	(b) ITEM NO	SMR CODE	NATIONAL STOCK NUMBER	PART NUMBER	FSCM	DESCRIPTION	USABLE ON CODE	QTY INC IN UNIT
1	41	XDHZZ	5365-00-804-7701	MS16624-4039	96906	RING,RETAINING	BBW	EA 1
1	42	XDHZZ		1533225-2	83298	SCREW,SELF-TAPPING	BBW	EA 2
1	43	XDHZZ		511061800-00	78189	NUT	BBW	EA 2
1	44	PAHZZ	5310-00-579-0079	MS35333-37	96906	WASHER,LOCK	BBW	EA 2
1	45	PAHZZ	6125-00-075-8267	1533217	83298	ARMATURE	BBW	EA 1
1	46	XDHZZ		1533170-1	83298	RETAINER,BEARING	BBW	EA 1
1	47	PAHZZ	5999-00-842-0810	1533739	83298	CLAMP,HOLDER	BBW	EA 2
1	48	PAHZZ	5940-00-557-4398	MS25036-48	96906	TERMINAL,LUG	BBW	EA 2
1	49	XDHZZ		1541722-3	83298	LEAD,ELECTRICAL	BBW	EA 1
1	50	XDHZZ	5310-00-145-1871	1533768-1	83298	NUT,SQUARE	BBW	EA 2
1	51	XDHZZ		819L64-114	83298	SCREW	BBW	EA 2
1	52	PAHZZ	5310-00-193-7577	AN936A4	88044	WASHER,LOCK	BBW	EA 2
1	53	XDHZZ		890486	83298	WASHER	BBW	EA 2
1	54	XDHZZ		1541722-2	83298	LEAD,ELECTRICAL	BBW	EA 1



MAJOR COMPONENTS

EL4DS003

Figure 2. Motor-Generator PU-543C/A, Rotating Section (Sheet 1 of 2).

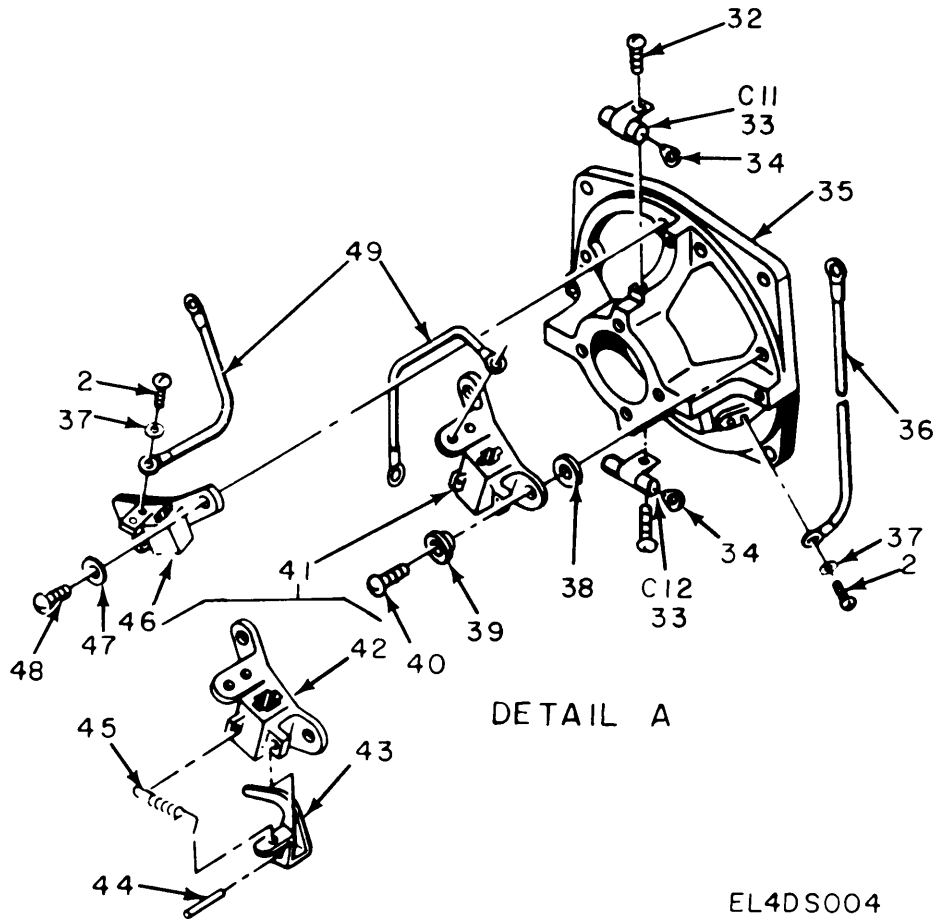


Figure 2. Motor-Generator PU-543C/A, Rotating Section (Sheet 2 of 2).

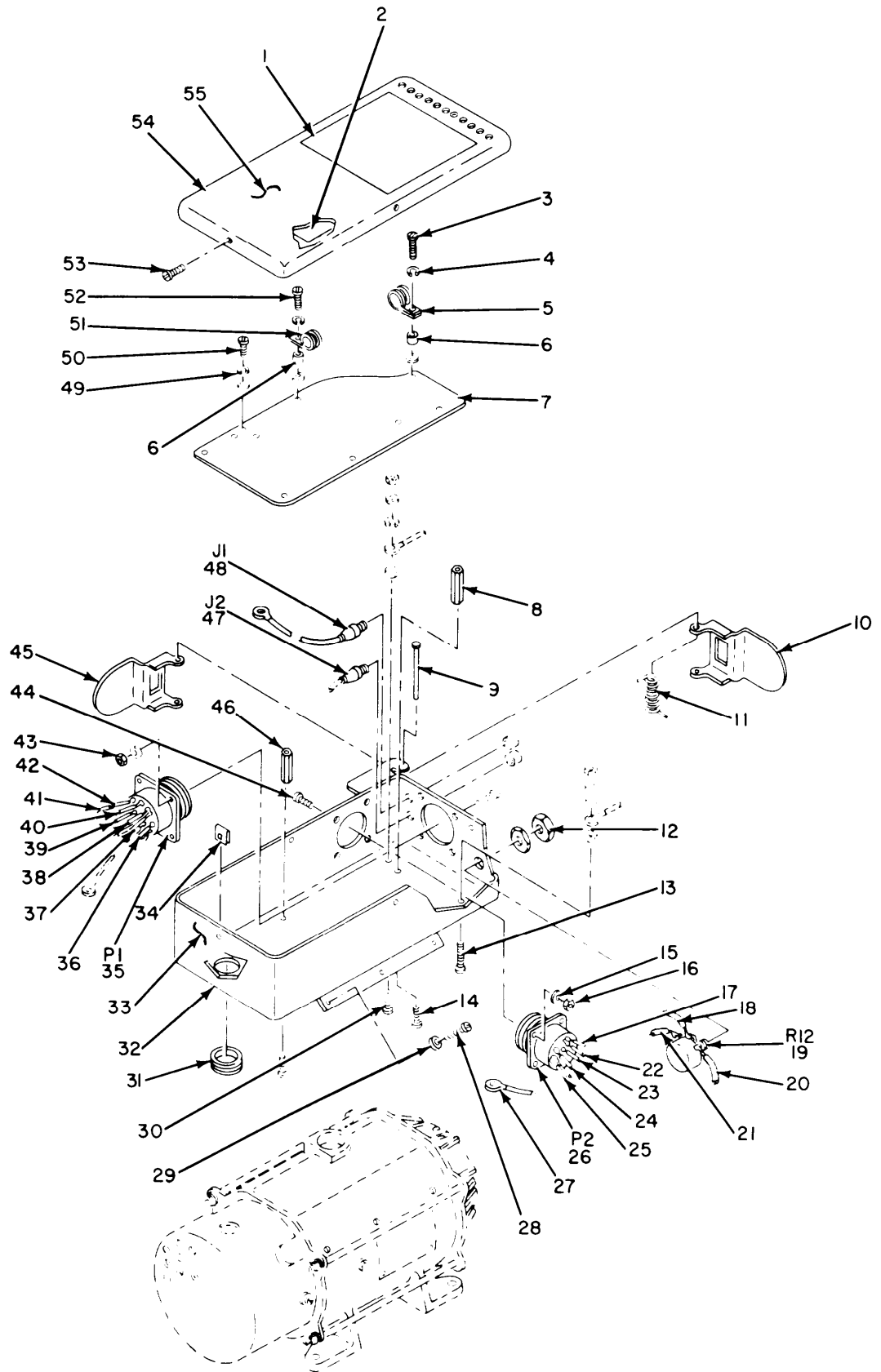
SECTION 11

TM11-6125-220-34P

(1) ILLUSTRATION		(2)	(3)	(4)	(5)	(6)	(7)	(8)
(a) FIG NO	(b) ITEM NO	SMR CODE	NATIONAL STOCK NUMBER	PART NUMBER	FSCM	DESCRIPTION	U/M	QTY INC IN UNIT
						US4BLF ON CODE		
2	1	PAHZZ	5977-00-341-8057	A10573	35662	BRUSH KIT ASSEMBLY	SHY EA	1
2	2	XDHZZ		A7471-5	07639	SCREW ASSEM WASHER	SHY EA	4
2	3	XDHZZ		H10003	07639	PLATE,RTNG,BRG	SHY EA	1
2	4	PAHZZ	6125-00-310-3502	A5083	07639	SPRING,LOADING	SHY EA	1
2	5	XDMZZ		1562-25	07639	WASHER,SHIM	SHY EA	4
2	6	XDHZZ	5365-00-527-8177	1562-26	07639	WASHER,SHIM	SHY EA	2
2	7	PAHZZ	5999-00-061-8168	A10211	07639	CAP,ELECTRICAL	SHY EA	4
2	8	XDHZZ		P10130	07639	END BELL	SHY EA	1
2	9	XDHZZ		AN515-4R8	88044	SCREW,MACHINE	SHY EA	4
2	10	PAHZZ	5340-00-598-9304	A8784	07639	CLAMP,RETAINING	SHY EA	1
2	11	PAHZZ	5910-00-683-7161	CP04A3E8104M	81349	CAPACITOR,FXD,PAPER	SHY EA	2
2	12	PAHZZ	3110-00-106-8843	MS17107-1	96906	BEARING,BALL,ANLR	SHY EA	1
2	13	PAHZZ	6125-00-061-6652	586501	07639	ARMATURE ASSY,MG	SHY EA	1
2	14	PAHZZ	6125-00-061-7057	G5452	07639	STATOR,MG	SHY EA	1
2	15	PAHZZ	9905-00-061-7284	MS26515-1	96906	PLATE,INSTRUCTION	SHY EA	1
2	16	PAHZZ	5305-00-175-3230	AN515-6R6	88044	SCREW,MACHINE	SHY EA	4
2	17	PAHHH	6125-00-083-8316	P9574	07639	MOTOR-GENERATOR SUBASSEMBLY	SHY EA	1
2	18	XDHZZ		A10090-1	07639	SCREW,MACHINE	SHY EA	4
2	19	XDHZZ		AN935-10L	88044	WASHER,LOCK	SHY EA	4
2	20	PAHZZ	6125-00-083-5893	SC4163	07639	END,BELL,ELECTRICAL	SHY EA	1
2	21	PAHZZ	3110-00-106-8843	MS17107-1	96906	BEARING,BALL,ANLR	SHY EA	1
2	22	PAHZZ	5365-00-061-8202	5101-39S	79136	RING,RETAINING	SHY EA	1
2	23	PAHZZ	6125-00-083-8321	A10260	07639	CLAMP	SHY EA	1
2	24	PAHZZ	3110-00-346-2371	A10259	07639	PLATE,RTNR,BRG	SHY EA	1
2	25	PAHZZ	3110-00-346-2370	A10258	07639	PLATE,RTNG,BRG	SHY EA	1
2	26	XDHZZ		AN505-6R6	88044	SCREW,MACHINE	SHY EA	4
2	27	XDHZZ		56508H3	88044	SCREW,SET	SHY EA	1
2	28	PAHZZ	4140-00-061-8116	SA10128	07639	FAN,ELECTRICAL	SHY EA	1
2	29	PAHZZ	6125-00-083-5896	C4578	07639	COVER,FAN	SHY EA	1
2	30	PAHZZ	5310-00-198-3724	AN935-6L	88044	WASHER,LOCK	SHY EA	4
2	31	XDHZZ		A10172-1	07639	SCREW,MACHINE	SHY EA	4
2	32	XDHZZ		A7478-4	07639	SCREW ASSY,WHSR STL	SHY EA	2
2	33	PAHZZ	5910-00-877-8664	CP12A3KB104K3	81349	CAPACITOR,FXD,PAPER	SHY EA	2
2	34	PAHZZ	5940-00-265-6576	34	77860	TERMINAL	SHY EA	2
2	35	XDHZZ		C4019	07639	END BELL,ELECTRICAL	SHY EA	1
2	36	XDHZZ		K20678	07639	LEAD,ELECTRICAL	SHY EA	1
2	37	XDHZZ		A3637-3	07639	WASHER,FLAT	SHY EA	2
2	38	PAHZZ	5310-00-636-1865	A10316	07639	DISC,INSULATOR	SHY EA	4
2	39	PAHZZ	5970-00-636-2027	A10315	07639	BUSHING,INSULATOR	SHY EA	4
2	40	PAHZZ	5305-00-984-4989	MS35206-229	96906	SCREW,MACHINE	SHY EA	4

SECTION II

(1) ILLUSTRATION		(2)	(3)	(4)	(5)	(6) DESCRIPTION	(7)	(8) QTY INC IN UNIT
(a) FIG NO.	(b) ITEM NO.	SMR CODE	NATIONAL STOCK NUMBER	PART NUMBER	FSCM	ENABLE ON CODE	U/M	
2	41	XDHHH		SA10347	07639	HOLDER, ELECTRICAL	5HY EA	2
2	42	XDHZZ		C4084-2	07639	BRUSH HOLDER SELECT	5HY EA	1
2	42	XDHZZ		C4081-2	07639	BRUSH HOLDER SELECT	5HY EA	1
2	43	XDHZZ		A10121	07639	ARM	5HY EA	2
2	44	XDHZZ		A9214-2	07639	PIN, GROOVED	5HY EA	2
2	45	PAHZZ	5360-00-763-0841	A10065	07639	SPRING, HLCL, CPRSN	5HY EA	2
2	46	PAHZZ	5977-00-937-7507	SA10323	07639	HOLDER, ELECTRICAL	5HY EA	2
2	47	PAHZZ	5310-00-167-0832	AN960-6L	88044	WASHER, FLAT	5HY EA	4
2	48	XDHZZ		A7471-6	07639	SCREW ASSEMBLY	5HY EA	4
2	49	XDHZZ		K20677	07639	LEAD, ELECTRICAL	5HY EA	2



EL4DS005

Figure 3. Regulator, Voltage and Frequency, PU-543B/A.

(1) ILLUSTRATION		(2)	(3)	(4)	(5)	(6)	(7)	(8)
(a) FIG NO.	(b) ITEM NO.	SMR CODE	NATIONAL STOCK NUMBER	PART NUMBER	FSCM	DESCRIPTION	UNABLE ON CODE	QTY INC IN UNIT
						GROUP 01 REGULATOR, VOLTAGE AND FREQUENCY		
3	1	XDHZZ		1543471	83298	PLATE, INSTRUCTION	BBW EA	1
3	2	XDHZZ		1543448	83298	DIAGRAM, CORDING	BBW EA	1
3	3	XDHZZ		MS35223-31	96906	SCREW, MACHINE	BBW EA	1
3	4	PAHZZ	5310-00-209-0788	MS35335-30	96906	WASHER, LOCK, SPLIT	BBW EA	2
3	5	PAHZZ	5340-00-958-4070	1114306-3	83298	CLIP, CABLE	BBW EA	1
3	6	XDHZZ		1113498-13	83298	SPACER	BBW EA	2
3	7	PAFZZ	6110-00-944-4181	1543373	83298	CONTROL PANEL BD	BBW EA	1
3	8	XDHZZ		1540924-1	83298	STANDOFF	BBW EA	1
3	9	XDHZZ		1110589-258	83298	RIVET	BBW EA	1
3	10	XDHZZ		1543487-1	83298	COVER, RECEPTACLE	BBW EA	1
3	11	PAHZZ	5360-00-926-5347	1533296	83298	SPRING	BBW EA	1
3	12	XDHZZ		511C61800-00	78189	NUT	BBW EA	2
3	13	XDHZZ		MS35229-32	96906	SCREW, MACHINE	BBW EA	2
3	14	XDHZZ	5305-00-637-7079	MS35223-26	96906	SCREW, MACHINE	BBW EA	1
3	15	PAHZZ	5310-00-167-0831	AN960-4L	88044	WASHER	BBW EA	8
3	16	PAHZZ	5935-00-755-3496	511041800-00	78189	NUT	BBW EA	4
3	17	XDHZZ		724-8082743-156	83298	LEAD, ELECTRICAL	BBW EA	1
3	18	XDHZZ		722-8072743-27	83298	LEAD, ELECTRICAL	BBW EA	1
3	19	PAHZZ	5905-00-951-7744	AWAW500	10582	RESISTOR	BBW EA	1
3	20	XDHZZ		724-8092743-128	83298	LEAD, ELECTRICAL	BBW EA	1
3	21	XDHZZ		724-8032743-138	83298	LEAD, ELECTRICAL	BBW EA	1
3	22	XDHZZ		724-817272735-72	83298	LEAD, ELECTRICAL	BBW EA	1
3	23	XDHZZ		724-8162735-77	83298	LEAD, ELECTRICAL	BBW EA	1
3	24	XDHZZ		724-8152735-98	83298	LEAD, ELECTRICAL	BBW EA	1
3	25	XDHZZ		724-8192735-92	83298	LEAD, ELECTRICAL	BBW EA	1
3	26	PAHZZ	5935-00-755-3241	MS3102R20-4P	96906	CONNECTOR, RCPT, ELEC	BBW EA	1
3	27	PAHZZ	5940-00-577-3807	MS25036-45	96906	TERMINAL	BBW EA	1
3	28	XDHZZ		MS35224-61	96906	SCREW, MACHINE	BBW EA	6
3	29	XDHZZ		MS35337-43	96906	WASHER, LOCK	BBW EA	6
3	30	PAHZZ	5305-00-930-4376	112-819754-104	83298	SCREW, SPRING	BBW EA	6
3	31	XDHZZ		1533413	83298	GROMMET	BBW EA	1
3	32	XDHZZ		1540938	83298	BASE, CONTROL PANEL	BBW EA	1
3	33	XDHZZ		1543472	83298	BASE, CONTROL PANEL	BBW EA	1
3	34	XDHZZ		C9222-621	78553	NUT, SPEED	BBW EA	4
3	35	PAHZZ	5935-00-755-3496	MS3102R24-20P	96906	CONNECTOR, RCPT, ELEC	BBW EA	1
3	36	XDHZZ		1541578-1	83298	LEAD, ELECTRICAL	BBW EA	1
3	37	XDHZZ		725-8194343-42	83298	LEAD, ELECTRICAL	BBW EA	1
3	38	XDHZZ		724-8193543-42	83298	LEAD, ELECTRICAL	BBW EA	1
3	39	XDHZZ		724-8173543-40	83298	LEAD, ELECTRICAL	BBW EA	1

SECTION 11

TM11-6125-220-34P

(1) ILLUSTRATION		(2)	(3)	(4)	(5)	(6)	(7)	(8)
(a) FIG NO.	(b) ITEM NO.	SMR CODE	NATIONAL STOCK NUMBER	PART NUMBER	FSCM	DESCRIPTION	U M	QTY INC IN UNIT
3	40	XDHZZ		MYC1246-24	83298	LEAD,ELECTRICAL	BBW EA	1
3	41	XDHZZ		724-8182735-87	83298	LEAD,ELECTRICAL	BBW EA	1
3	42	XDHZZ		725-8014333-26	83298	LEAD,ELECTRICAL	BBW EA	1
3	43	XDHZZ		511041800-00	77900	NUT	BBW EA	4
3	44	XDHZZ		MS35223-16	96906	SCREW,MACHINE	BBW EA	8
3	45	XDHZZ		1543487-2	83298	COVER,RECEPTACLE	BBW EA	1
3	46	PAHZZ	6125-00-927-6330	1540924-2	83298	STANDOFF	BBW EA	1
3	47	PAHZZ	5935-00-605-7696	7150763P2	01009	CONNECTOR,BLACK	BBW EA	1
3	48	PAHZZ	5935-00-605-7695	7150763P1	01009	CONNECTOR,RED	BBW EA	1
3	49	XDHZZ		MS35337-41	96906	WASHER,LOCK,SPLIT	BBW EA	8
3	50	XDHZZ		MS35223-27	96906	SCREW,MACHINE,PN HD	BBW EA	11
3	51	XDHZZ		M5AB29-A-743-16-4	95987	CLIP,CABLE	BBW EA	1
3	52	XDHZZ		819L66-144	83298	SCREW,MACHINE	BBW EA	1
3	53	XDFZZ		1537214-081	83298	SCREW,SELF-TAPPING	BBW EA	4
3	54	XDHZZ		1543456	83298	COVER,CONTROL PNL	BBW EA	1
3	55	XDHZZ		1543469	83298	COVER,CONTROL PNL	BBW EA	1

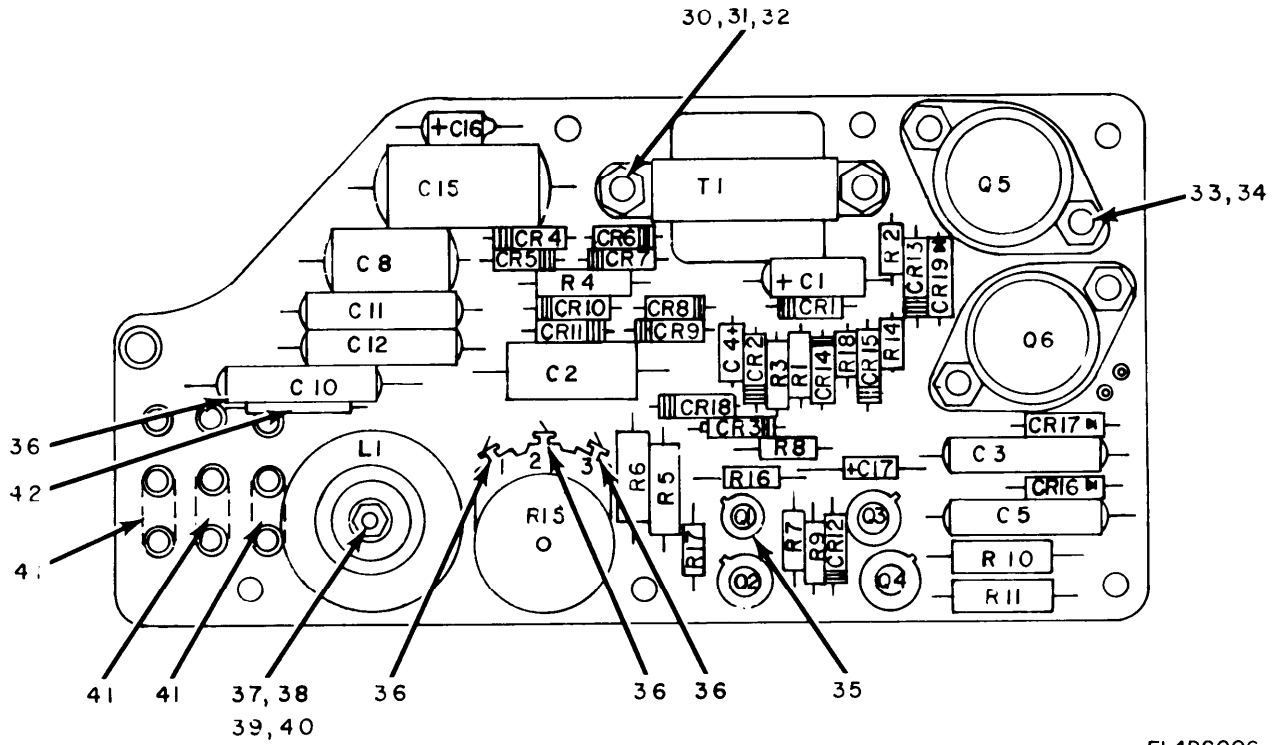


Figure 4. Regulator, Voltage and Frequency, PU-543B/A,
Circuit Card Assembly (Sheet 1 of 2).

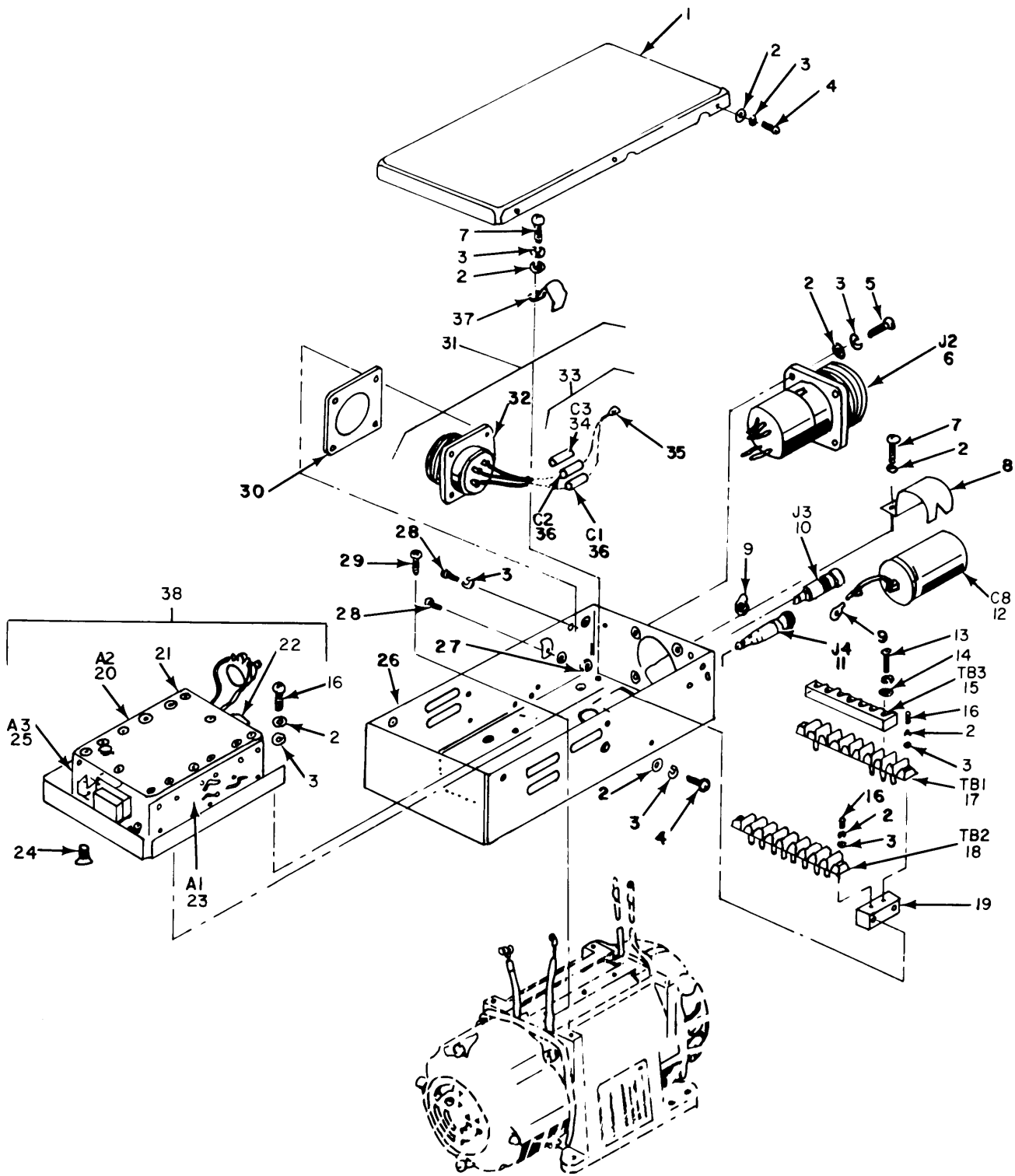
EL4DS006

REF. DES.	ITEM NO.	REF. DES.	ITEM NO.	REF. DES.	ITEM NO.
C1	1	CR9	9	R3	18
C2	2	CR10	9	R4	19
C3	3	CR11	9	R5	20
C4	4	CR12	9	R6	21
C5	3	CR13	9	R7	22
C8	5	CR14	9	R8	23
C10	3	CR15	9	R9	22
C11	3	CR16	11	R10	24
C12	3	CR17	11	R11	25
C15	6	CR18	9	R14	23
C16	7	CR19	11	R15	26
C17	8	L1	12	R16	27
CR1	9	Q1	13	R17	28
CR2	9	Q2	14	R18	17
CR3	10	Q3	15	T1	29
CR4	9	Q4	15		
CR5	9	Q5	16		
CR6	9	Q6	16		
CR7	9	R1	17		
CR8	9	R2	17		

EL4DS007

Figure 4. Regulator, Voltage and Frequency, PU-543B/A
Circuit Card Assembly (Sheet 2 of 2).

(1) ILLUSTRATION		(2)	(3)	(4)	(5)	(6)	(7)	(8)
(a) FIG NO.	(b) ITEM NO.	SMR CODE	NATIONAL STOCK NUMBER	PART NUMBER	FSCM	DESCRIPTION	U. M.	QTY INC IN UNIT
						UNABLE ON CODE		
4	1	XDHZZ	5910-00-917-5085	1500226X9035R0	56289	CAPACITOR	BBW EA	1
4	2	XDHZZ		96P6839352	56289	CAPACITOR	BBW EA	1
4	3	XDHZZ		65P22303	56289	CAPACITOR	BBW EA	5
4	4	XDHZZ		1500186X9015B0	56289	CAPACITOR	BBW EA	1
4	5	PAHZZ	5910-00-926-2372	247M222J	96733	CAPACITOR	BBW EA	1
4	6	XDHZZ		247M2105	96733	CAPACITOR	BBW EA	1
4	7	PAHZZ	5910-01-004-9276	M39006-09-8586	81349	CAPACITOR	BBW EA	1
4	8	XDHZZ		1500154X9035A0	56289	CAPACITOR	BBW EA	1
4	9	XDHZZ		1N645	80131	SEMICONDUCTOR, DIODE	BBW EA	15
4	10	PAHZZ	5961-00-892-0889	1N936A	94990	SEMICONDUCTOR, DIODE	BBW EA	1
4	11	PAHZZ	5961-00-225-8717	SC1	14099	RECTIFIER, SILICON	BBW EA	3
4	12	PAHZZ	5950-00-999-9607	1540906-1	83298	REACTOR	BBW EA	1
4	13	XDHZZ		2N3250	94990	TRANSISTOR	BBW EA	1
4	14	PAHZZ	5961-00-845-3954	2N329A	49956	TRANSISTOR	BBW EA	1
4	15	PAHZZ	5961-00-789-4031	2N2043	94990	TRANSISTOR	BBW EA	2
4	16	PAHZZ	5961-00-882-8681	2N1546	94990	TRANSISTOR	BBW EA	2
4	17	PAHZZ	5905-00-950-1607	MF5C5100F	19701	RESISTOR	BBW EA	3
4	18	XDHZZ		MF5C201F	19701	RESISTOR	BBW EA	1
4	19	PAHZZ	5905-00-926-2728	RS2800K10500H	91633	RESISTOR	BBW EA	1
4	20	PAHZZ	5905-00-661-0537	RS28601H	91637	RESISTOR	BBW EA	1
4	21	PAHZZ	5905-00-950-8826	RS800K400ROH	91637	RESISTOR	BBW EA	1
4	22	PAHZZ	5905-00-926-2732	MF5C05111F	19701	RESISTOR	BBW EA	2
4	23	XDHZZ		MF5C1821F	19701	RESISTOR	BBW EA	2
4	24	XDHZZ		RS2000K249ROF	91637	RESISTOR	BBW EA	1
4	25	XDHZZ		RS2-501H	91637	RESISTOR	BBW EA	1
4	26	PAHZZ	5905-00-958-4075	AWAW400	10582	RESISTOR	BBW EA	1
4	27	PAHZZ	5905-00-950-1615	MF5C3921F	19701	RESISTOR	BBW EA	1
4	28	XDHZZ		MF5C101F	19701	RESISTOR	BBW EA	1
4	29	PAHZZ	5950-00-947-8457	1540908	83298	TRANSFORMER	BBW EA	1
4	30	XDHZZ	5305-00-207-0763	MS35223-28	96906	SCREW, MACHINE	BBW EA	2
4	31	PAHZZ	5310-00-167-0832	AN960-6L	88044	WASHER	BBW EA	2
4	32	XDHZZ		511061800-00	78189	NUT	BBW EA	2
4	33	XDHZZ		819266-214	83298	SCREW	BBW EA	4
4	34	XDHZZ		511061800-00	78189	NUT	BBW EA	4
4	35	XDHZZ	5999-00-855-3760	1540923	83298	ADAPTER, XSTR MTG	BBW EA	1
4	36	XDHZZ		MWT24	83298	WIRE, MAGNET	BBW EA	4
4	37	PAHZZ	5305-00-984-4977	MS35223-20	96906	SCREW, MACHINE	BBW EA	1
4	38	XDHZZ		511041800-00	78189	NUT	BBW EA	1
4	39	XDHZZ		25151-13-5	63743	WASHER	BBW EA	1
4	40	XDHZZ		11035590-2	83298	WASHER	BBW EA	2



EL4DS008

Figure 5. Regulator, Voltage and Frequency PU-543C/A.

SECTION II

TM11-6125-220-34P

(1)		(2)	(3)	(4)	(5)	(6)	(7)	(8)
ILLUSTRATION		SMR CODE	NATIONAL STOCK NUMBER	PART NUMBER	FSCM	DESCRIPTION	UNABLE ON CODE	QTY INC IN UNIT
(a) FIG NO.	(b) ITEM NO.							
5	1	XDOZZ	6125-00-828-7649	P11780	07639	COVER,REGULATOR	5HY EA	1
5	2	PAOZZ	5310-00-198-3724	AN935-6L	88044	WASHER,LOCK	5HY EA	15
5	3	PAOZZ	5310-00-167-0832	AN960-6L	88044	WASHER,FLAT	5HY EA	4
5	4	XDOZZ	5305-00-637-7079	MS35223-26	96906	SCREW,MACHINE	5HY EA	6
5	5	XDHZZ		AN515-6R6	98044	SCREW,MACHINE	5HY EA	5
5	6	PAHZZ	6125-00-083-8319	P10128	07639	MOTOR GEN CONN	5PY EA	1
5	7	XDHZZ		AN515-6R5	88044	SCREW,MACHINE	5HY EA	4
5	8	XDHZZ		A10649	07639	CLAMP,RETAINING	5HY EA	1
5	9	PAHZZ	5940-00-204-8990	MS25036-11	96906	TERMINAL,LUG	5HY EA	2
5	10	PAHZZ	5935-00-061-6677	SA10366-5	07639	JACK,TIP	5HY EA	1
5	11	XDHZZ	5935-00-539-2045	MS16108-2C	96906	JACK,TIP	5PY EA	1
5	12	PAHZZ	5910-00-086-7776	K22823	07639	CAPACITOR,FXD,METAL	5HY EA	1
5	13	XDOZZ		K26232	07639	SCREW,EXT RLV BODY	5HY EA	7
5	14	XDOZZ		A3637-3	07639	WASHER,FLAT	5HY EA	11
5	15	XDOZZ		K26231	07639	TERMINAL BOARD	5HY EA	1
5	16	XDHZZ		AN515-6R8	88044	SCREW,MACHINE	5HY EA	4
5	17	XDHZZ	5940-00-934-8335	P11774	07639	TERMINAL BOARD	5HY EA	1
5	18	XDHZZ		P11775	07639	TERMINAL BOARD	5HY EA	1
5	19	XDHZZ		K26233	07639	SPACER,BLOCK	5HY EA	2
5	20	PAFZZ	6110-00-757-7036	G5877-1	07639	ASSEMBLY,CKT BD	5HY EA	1
5	21	XDHZZ		K24873-4	07639	SCREW,MACHINE	5PY EA	12
5	22	XDHZZ		55754	84971	CLAMP,LOOP	5PY EA	1
5	23	PAFZZ	6110-00-757-7038	G5876	07639	ASSEMBLY,CKT BD	5HY EA	1
5	24	XDHZZ	5305-00-470-8352	K24873-3	07639	SCREW ASSEMBLY	5HY EA	6
5	25	PAFZZ	6110-00-757-7037	G5878	07639	ASSEMBLY,CKT BD	5HY EA	1
5	26	PAHZZ	6125-00-083-5894	G5453	07639	HOUSING,RGLTR UNIT	5PY EA	1
5	27	XDFZZ		AN340-4	88044	NUT,PLAIN,HEXAGON	5HY EA	1
5	28	XDHZZ		A10219-6	35662	SCREW,MACHINE	5HY EA	4
5	29	XDHZZ		AN5C7-1032R6	88044	SCREW,MACHINE	5HY EA	4
5	30	XDHZZ		K22803	07639	WASHER,METALLIC	5HY EA	1
5	31	XDHMH	6125-00-083-8320	P10131	07639	CONNECTOR AND FLTR UN	5PY EA	1
5	32	XDHZZ		K22754	07639	CONNECTOR,RCPT,ELEC	5HY EA	1
5	33	XDHMH		K22797	07639	CAPACITOR ASSY	5HY EA	1
5	34	PAHZZ	5910-00-932-0619	P9528-41	07639	CAPACITOR,FXD,PLSTC	5HY EA	1
5	35	XDHZZ		MS25036-2	96906	TERMINAL,LUG	5HY EA	1
5	36	PAHZZ	5910-00-728-6012	CP04A3KE333M	81349	CAPACITOR,FXD,PAPER	5PY EA	2
5	37	XDHZZ		K22769	07639	CLAMP,RETAINING	5HY EA	1
5	38	XDFZZ		CSV1185-1	07639	REGULATOR, V+ F ASSEMBLY	5HY EA	1
5	38	PAFHD	6110-00-497-9074	CSV2215-3	07639	REGULATOR, V+ F ASSEMBLY (SEE TM 11-6125-220-34P-2 FOR PARTS)	EA	1
5	38	PAFHD	6110-00-497-9074	4B93-1A	83298	REGULATOR, V+ F ASSEMBLY (SEE TM 11-6125-220-34P-2 FOR PARTS)	EA	1

SECTION IV

NATIONAL STOCK NUMBER AND PART NUMBER INDEX

TM11-6125-220-34P

NOTE: LATEST NATIONAL STOCK NUMBER AND PART NUMBER ASSIGNMENTS ARE INDICATED AT END OF INDEX

STOCK NUMBER	FIGURE NO.	ITEM NO.	STOCK NUMBER	FIGURE NO.	ITEM NO.
6125-00-061-6652	2	13	5310-00-579-0079	1	..
5935-00-061-6677	5	10	5340-00-598-9304	2	10
6125-00-061-7057	2	14	5935-00-605-7695	3	48
9905-00-061-7284	2	15	5935-00-605-7696	3	47
			5310-00-636-1865	2	38
4140-00-061-8116	2	28	5970-00-636-2027	2	39
5999-00-061-8168	2	7	5305-00-637-7079	3	14
5365-00-061-8202	2	22	5305-00-637-7079	5	4
			5905-00-661-0537	4	20
6125-00-075-8267	1	45	5910-00-683-7161	2	11
5977-00-076-0517	1	27	5910-00-689-8751	1	30
5977-00-076-0517	1	38	5910-00-728-6012	5	36
6125-00-083-5893	2	20	5935-00-755-3241	3	26
6125-00-083-5894	5	26	5935-00-755-3496	3	16
6125-00-083-5896	2	29	5935-00-755-3496	3	35
6125-00-083-8316	2	17	6110-00-757-7036	5	20
6125-0-083-8319	5	6	6110-00-757-7037	5	25
6125-00-083-8320	5	31	6110-00-757-7038	5	23
6125-00-083-8321	2	23	5961-00-789-4031	4	15
5910-00-086-7776	5	12	5365-00-804-7701	1	41
3110-00-106-8843	1	19	6125-00-828-7649	5	1
3110-00-106-8843	2	21	5999-00-842-0810	1	47
5310-00-145-1871	1	50	5999-00-855-3760	4	35
5310-00-167-0816	1	21	5910-00-877-8664	2	33
5310-00-167-0831	3	15	5961-00-882-8681	4	16
5310-00-167-0832	2	47	5961-00-892-0889	4	10
5310-00-167-0832	4	31	5999-00-905-1980	1	28
5310-00-167-0832	5	3	5910-00-917-5085	4	1
5305-00-175-3230	2	16	5910-00-926-2372	4	5
5310-00-193-7577	1	52	5905-00-926-2728	4	19
5310-00-198-3724	2	30	5905-00-926-2732	4	22
5310-00-198-3724	5	2	5999-00-926-3142	1	40
5940-00-204-8966	1	36	5360-00-926-5347	3	11
5940-00-204-8990	1	3	6125-00-926-6346	1	25
5940-00-204-8990	5	9	6125-00-927-6330	3	46
5305-00-207-0763	4	30	5910-00-932-0619	5	34
5310-00-209-0788	3	4	5940-00-934-8335	5	17
5961-00-225-8717	4	11	5977-00-937-9507	2	46
5940-00-265-6576	2	34	6110-00-944-4181	3	7
5310-00-274-8682	1	1	6125-00-944-4219	1	8
5315-00-291-5471	1	16	5950-00-947-8457	4	29
6125-00-310-3502	2	4	5905-00-950-1607	4	17
5977-00-341-8057	2	1	5905-00-950-1615	4	27
3110-00-346-2371	2	24	5905-00-950-8826	4	21
5305-00-470-8352	5	24	5905-00-951-7744	3	19
5310-00-515-8058	1	15	5905-00-958-4075	4	26
5365-00-527-8177	2	6	5305-00-984-4977	4	37
5935-00-539-2045	5	11	5305-00-984-4989	3	40
5940-00-557-4398	1	48	6125-00-999-8327	1	39
5940-00-577-3807	1	7	5950-00-999-9607	4	12
5940-00-577-3807	3	27			

PART NUMBER	FSCM	FIG. NO.	ITEM NO.	PART NUMBER	FSCM	FIG. NO.	ITEM NO.
AN340-4	88044	5	27	A10121	07639	2	43
AN340-6	88044	1	9	A10172-1	07639	2	31
AN5C7-1032R6	88044	5	29	A10211	07639	2	7
AN505-6R6	88044	2	26	A10219-6	35662	5	28
AN515-4R8	88044	2	9	A10259	07639	2	24
AN515-6R5	88044	5	7	A10260	07639	2	23
AN515-6R6	88044	2	16	A10315	07639	2	39
AN515-6R6	88044	5	5	A10316	07639	2	38
AN515-6R8	88044	5	16	A10573	35662	2	1
AN935-10L	88044	2	19	A10649	07639	5	8
AN935-6L	88044	2	30	A3637-3	07639	2	37
AN935-6L	88044	5	2	A3637-3	07639	5	14
AN936A4	88044	1	52	A5083	07639	2	4
AN936A6	88044	1	1	A52	46992	1	40
AN960-4L	88044	3	15	A7471-5	07639	2	2
AN960-6L	88044	2	47	A7471-6	07639	2	48
AN960-6L	88044	4	31	A7478-4	07639	2	32
AN960-6L	88044	5	3	A8784	07639	2	10
AN960-8	88044	1	15	A9214-2	07639	2	44
AWAW400	10582	4	26	CP04A3EB104M	81349	2	11
AWAW500	10582	3	19	CP04A3KE333M	81349	5	36
A10258	07639	2	25	CP12A3K8104K3	81349	2	33
A10065	07639	2	45				
A10090-1	07639	2	18	C4019	07639	2	35

PART NUMBER	FSCM	FIG. NO.	ITEM NO.	PART NUMBER	FSCM	FIG. NO.	ITEM NO.
C4081-2	07639	2	42				
C4084-2	07639	2	42				
C4578	07639	2	29	TSW2106-07	83298	4	42
C68	46992	1	28	WYC1246-24	83298	3	40
C9222-6Z1	78553	3	34	1N645	80131	4	9
G5452	07639	2	14	1N936A	94990	4	10
G5453	07639	5	26	1102665	83298	1	35
G5876	07639	5	23	11035590-2	83298	4	40
G5877-1	07639	5	20	1110589-258	83298	3	9
G5878	07639	5	25	1113498-13	83298	3	6
H10003	07639	2	3	1114306-3	83298	3	5
K20677	07639	2	49	1118091	83298	1	39
K20678	07639	2	36	112-819754-104	83298	3	30
K22754	07639	5	32	150D154X9035A0	56289	4	8
K22769	07639	5	37	150D186X9015B0	56289	4	4
K22797	07639	5	33	150D226X9035R0	56289	4	1
K22803	07639	5	30	1530263	83298	1	18
K22823	07639	5	12	1533170-2	83298	1	20
K24873-3	07639	5	24	1533170-1	83298	1	46
K24873-4	07639	5	21	1533170-3	83298	1	17
K26231	07639	5	15	1533217	83298	1	45
K26232	07639	5	13	1533218	83298	1	26
K26233	07639	5	19	1533219	83298	1	25
MF5CD5111F	19701	4	22	1533225-2	83298	1	42
MF5C101F	19701	4	28	1533227	83298	1	29
MF5C1821F	19701	4	23	1533296	83298	3	11
MF5C201F	19701	4	18	1533413	83298	3	31
MF5C3921F	19701	4	27	1533547	83298	1	11
MF5C5100F	19701	4	17	1533633	83298	1	38
MS16108-2C	96906	5	11	1533635	83298	1	27
MS16624-4039	96906	1	41	1533738	83298	1	34
				1533739	83298	1	47
MS17107-1	96906	2	12	1533768-1	83298	1	50
MS17107-1	96906	1	19	1537021	83298	1	4
MS17107-1	96906	2	21	1537214-081	83298	3	53
MS171431	96906	1	16	153768-2	83298	1	33
MS25036-48	96906	1	48	1540924-1	83298	3	8
MS25036-11	96906	1	3	1540892	83298	1	37
MS25036-11	96906	5	9	1540893	83298	1	32
MS25036-2	96906	1	36	1540906-1	83298	4	12
MS25036-2	96906	5	35	1540908	83298	4	29
MS25036-45	96906	1	7	1540923	83298	4	35
MS25036-45	96906	3	27	1540924-2	83298	3	46
MS26515-1	96906	2	15	1540938	83298	3	32
MS3102R20-4P	96906	3	26	1541578-1	83298	3	36
MS3102R24-20P	96906	3	35	1541722-2	83298	1	54
MS35223-16	96906	3	44	1541722-3	83298	1	49
MS35223-20	96906	4	37	1543372	83298	4	41
MS35223-26	96906	3	14	1543373	83298	3	7
MS35223-26	96906	4	4	1543448	83298	3	2
MS35223-27	96906	3	50	1543449	83298	1	13
MS35223-28	96906	4	30	1543456	83298	3	54
MS35223-31	96906	3	3	1543469	83298	3	55
MS35224-61	96906	3	28	1543471	83298	3	1
MS35229-32	96906	3	13	1543472	83298	3	33
MS35333-37	96906	1	44	1543487-1	83298	3	10
MS35335-30	96906	3	4	1543487-2	83298	3	45
MS35337-41	96906	3	49	1543572	83298	1	8
MS35337-43	96906	3	29	1543573	83298	1	5
MWT24	83298	4	36	1562-25	07639	2	5
M5AB29-A-743-16-4	95987	3	51	1562-26	07639	2	6
P10128	07639	5	6	2N1546	94990	4	16
P10130	07639	2	8	2N2043	94990	4	15
P10131	07639	5	31	2N3250	94990	4	13
P11774	07639	5	17	2N329A	49956	4	14
P11775	07639	5	18	247M2105	96733	4	6
P11780	07639	5	1	247M222J	96733	4	5
P9528-41	07639	5	34	25151-13-5	63743	4	39
P9574	07639	2	17				
RSB00K400R0H	91637	4	21	34	77860	2	34
RS2-501H	91637	4	25	34006	88044	1	22
RS2B00K10500H	91633	4	19	5B6501	07639	2	13
RS2B601H	91637	4	20	5C50	56289	1	30
RS2000K249R0F	91637	4	24	5101-39S	79136	2	22
SA10128	07639	2	28	511061800-00	78189	3	12
SA10323	07639	2	46	511041800-00	77900	3	43
SA10347	07639	2	41	511041800-00	78189	3	16
SA10366-5	07639	5	10	511041800-00	78189	4	38
SC1	14099	4	11	511061800-00	78189	4	34
SC4163	07639	2	20	511061800-00	78189	1	43

PART NUMBER	FSCM	FIG. NO.	ITEM NO.	PART NUMBER	FSCM	FIG. NO.	ITEM NO.
511061800-00	78189	4	32	724-81193543-42	83298	3	38
				725-8014333-26	83298	3	42
557S4	84971	5	22	725-8194343-42	83298	3	37
565D8H3	88044	2	27	819L64-114	83298	1	51
65P22303	56289	4	3	819L66-144	83298	3	52
7150763P1	01009	3	48	819146-110	83298	1	12
7150763P2	01009	3	47	819166-108	83298	1	23
722-807274327	83298	3	18	819166-116	83298	1	2
724-8032743138	83298	3	21	819178-116	83298	1	14
724-8032743-156	83298	3	17	819196-106	83298	1	24
724-8092743-128	83298	3	20	819266-214	83298	4	33
724-8152735-98	83298	3	24	890486	83298	1	53
724-8162735-77	83298	3	23	890487	83298	1	10
724-817272735-72	83298	3	22	890646-10	03298	1	6
724-8173543-40	83298	3	39	96P6839352	56289	4	2
724-8182735-87	83298	3	41	960-6	88044	1	21
724-8192735-92	83298	3	25				

LATEST NATIONAL STOCK NUMBER ASSIGNMENTS

STOCK NUMBER	FIG. NO.	ITEM NO.
5910-00-004-9276	1	31
5910-00-004-9276	4	7
3110-00-346-2370	2	25
6110-00-497-9074	5	38
5360-00-763-0841	2	45
5961-00-845-3954	4	14
5310-00-849-3952	1	35
5305-00-930-4376	3	30
5340-00-958-4070	3	5

LATEST PART NUMBER ASSIGNMENTS

PART NUMBER	FSCM	FIG. NO.	ITEM No.
CSV1185-1	07639	5	38
CSV2215-3	07639	5	38
MS35206-229	96906	2	40
M39006-09-8586	81349	1	31
M39006-09-8586	81349	4	7
4B93-1A	83298	5	38

RECOMMENDED CHANGES TO EQUIPMENT TECHNICAL MANUALS



THEN... JOT DOWN THE DOPE ABOUT IT ON THIS FORM, TEAR IT OUT, FOLD IT AND DROP IT IN THE MAIL!

SOMETHING WRONG WITH THIS MANUAL?

FROM: (YOUR UNIT'S COMPLETE ADDRESS)

Commander
Stateside Army Depot
ATTN: AMSTA-US
Stateside, N.J. 07703

DATE 10 July 1975

PUBLICATION NUMBER

TM 11-5840-340-12

DATE

23 Jan 74

TITLE

Radar Set AN/P-3-76

BE EXACT... PIN-POINT WHERE IT IS

PAGE NO.	PARA-GRAPH	FIGURE NO.	TABLE NO.
2-25	2-28		
3-10	3-3		3-1
5-6	5-8		
		FO3	

IN THIS SPACE TELL WHAT IS WRONG AND WHAT SHOULD BE DONE ABOUT IT:

Recommend that the installation antenna alignment procedure be changed through to specify a 2° IFF antenna lag rather than 1°.

REASON: Experience has shown that with only a 1° lag, the antenna servo system is too sensitive to wind gusting in excess of 25 knots, and has a tendency to rapidly accelerate and decelerate as it hunts, causing strain to the drive train. Hunting is minimized by adjusting the lag to 2° without degradation of operation.

Item 5, Function column. Change "2 db" to "3db."

REASON: The adjustment procedure for the TRANS POWER FAULT indicator calls for a 3 db (500 watts) adjustment to light the TRANS POWER FAULT indicator.

Add new step f.1 to read, "Replace cover plate removed in step e.1, above."

REASON: To replace the cover plate.

Zone C 3. On J1-2, change "+24 VDC to "+5 VDC."

REASON: This is the output line of the 5 VDC power supply. + 24 VDC is the input voltage.

TEAR ALONG DOTTED LINE

TYPED NAME, GRADE OR TITLE, AND TELEPHONE NUMBER

SSG I. M. DeSpiritof 999-1776

SIGN HERE:

SSG I. M. DeSpiritof

DA FORM 2028-2 (TEST)

1 AUG 74

P.S.--IF YOUR OUTFIT WANTS TO KNOW ABOUT YOUR MANUAL "FIND" MAKE A CARBON COPY OF THIS AND GIVE IT TO YOUR HEADQUARTERS.

HISA 1686-75

FILL IN YOUR
UNIT'S ADDRESS

FOLD BACK

DEPARTMENT OF THE ARMY

OFFICIAL BUSINESS

PENALTY FOR PRIVATE USE, \$300

POSTAGE AND FEES PAID
DEPARTMENT OF THE ARMY
DOD-314



Commander
US Army Communications and Electronics
Materiel Readiness Command
ATTN: DRSEL-MA-Q
Fort Monmouth, New Jersey 07703

TEAR ALONG DOTTED LINE

FOLD BACK

RECOMMENDED CHANGES TO EQUIPMENT TECHNICAL MANUALS



SOMETHING WRONG WITH THIS MANUAL?

THEN... JOT DOWN THE DOPE ABOUT IT ON THIS FORM, TEAR IT OUT, FOLD IT AND DROP IT IN THE MAIL!

FROM: (YOUR UNIT'S COMPLETE ADDRESS)

DATE

PUBLICATION NUMBER

TM 11-6125-220-34P

DATE

21 Mar 78

TITLE

BE EXACT... PIN-POINT WHERE IT IS

IN THIS SPACE TELL WHAT IS WRONG AND WHAT SHOULD BE DONE ABOUT IT:

PAGE NO.	PARA-GRAPH	FIGURE NO.	TABLE NO.
----------	------------	------------	-----------

TEAR ALONG DOTTED LINE

TYPED NAME, GRADE OR TITLE, AND TELEPHONE NUMBER

SIGN HERE:

DA FORM 1 AUG 74 2028-2 (TEST)

P.S.--IF YOUR OUTFIT WANTS TO KNOW ABOUT YOUR MANUAL "FIND," MAKE A CARBON COPY OF THIS AND GIVE IT TO YOUR HEADQUARTERS.

FILL IN YOUR
UNIT'S ADDRESS

FOLD BACK

DEPARTMENT OF THE ARMY

OFFICIAL BUSINESS

PENALTY FOR PRIVATE USE, \$300

POSTAGE AND FEES PAID
DEPARTMENT OF THE ARMY
DOD-314



Commander
US Army Communications and Electronics
Materiel Readiness Command
ATTN: DRSEL-MA-Q
Fort Monmouth, New Jersey 07703

TEAR ALONG DOTTED LINE

FOLD BACK

RECOMMENDED CHANGES TO EQUIPMENT TECHNICAL MANUALS



SOMETHING WRONG WITH THIS MANUAL?

THEN... JOT DOWN THE DOPE ABOUT IT ON THIS FORM, TEAR IT OUT, FOLD IT AND DROP IT IN THE MAIL!

FROM: (YOUR UNIT'S COMPLETE ADDRESS)

DATE

PUBLICATION NUMBER

TM 11-6125-220-34P

DATE

21 Mar 78

TITLE

BE EXACT... PIN-POINT WHERE IT IS

IN THIS SPACE TELL WHAT IS WRONG AND WHAT SHOULD BE DONE ABOUT IT:

PAGE NO.	PARA-GRAPH	FIGURE NO.	TABLE NO.
----------	------------	------------	-----------

TEAR ALONG DOTTED LINE

TYPED NAME, GRADE OR TITLE, AND TELEPHONE NUMBER

SIGN HERE:

DA FORM 2028-2 (TEST)
1 AUG 74

P.S.--IF YOUR OUTFIT WANTS TO KNOW ABOUT YOUR MANUAL "FIND," MAKE A CARBON COPY OF THIS AND GIVE IT TO YOUR HEADQUARTERS.

FILL IN YOUR
UNIT'S ADDRESS

FOLD BACK

DEPARTMENT OF THE ARMY

OFFICIAL BUSINESS

PENALTY FOR PRIVATE USE, \$300

POSTAGE AND FEES PAID
DEPARTMENT OF THE ARMY
DOD-314



Commander
US Army Communications and Electronics
Materiel Readiness Command
ATTN: DRSEL-MA-Q
Fort Monmouth, New Jersey 07703

TEAR ALONG DOTTED LINE

FOLD BACK

TM 11-6125-220-34P

By Order of the Secretary of the Army:

BERNARD W. ROGERS
General, United States Army
Chief of Staff

Official: _____

J. C. PENNINGTON
Brigadier General, United States Army
The Adjutant General

Distribution:

Active Army, ARNG, USAR: To redistributed in accordance with DA Form 12-36, Section 1, direct and general support avionics literature requirements for PU-543 ()/A.

